

ROLAND PERCUSSION PRODUCTS



SPD-S SAMPLING PAD



SPD-20 TOTAL PERCUSSION PAD



SPD-6 PERCUSSION PAD



HPD-15 HANDSONIC



Roland®

Add Sampling to Any Percussion Setup!



The SPD-S Sampling Pad is a simple and affordable way to tap into the power of sampling. Six pads and three edge triggers allow drummers to trigger CD-quality samples and create phrase loops complete with pro-quality effects.



MULTI-EFFECTS

1 REVERB+GATE (Reverb+Gate)	11 SIMPLE-COMP (Compressor)	21 RADIOTUNING (Radio Tuning)
2 DLYEDREVERB (Delayed Reverb)	12 COMP-ENHANC (Compressor+Enhancer)	22 RINGMODULAT (Ring Modulator)
3 STEREODELAY (Stereo Delay)	13 2BAND-COMP (2Band Compressor)	23 PITCHSHIFT (Pitch Shifter)
4 SYNC-DELAY (Sync Delay)	14 4BAND-PEQ (4Band Parametric Equalizer)	24 PITCHBENDER (Pitch Bender)
5 TAPE-ECHO (Tape Echo)	15 FILTER	25 OCTAVE
6 CHORUS	16 ISOLATOR	26 VOICETRANS (Voice Transformer)
7 PHASER	17 WAH	27 CENTRCANCEL (Center Canceled)
8 FLANGER	18 OVERDRIVE	28 SYNTH-PERC (Synthesizer Percussion)
9 STEPFLANGER (Step Flanger)	19 DISTORTION	29 SHORT-LOOPER (Short Looper)
10 TREMOLO/PAN	20 LO-FI (Lo-Fi Processor)	30 SLICER

PRE-LOADED SOUNDS

001 Moon Drs	029 16BIEnd	051 Haaiay	086 CowbBrng	133-135 Xsttk	x 3
002 Moon Bas	030 16BSnr	052 BasSlide	087 CowbMmbo	136 808Claps	
003-004 Moon Gt x 2			088-089 Agojo x 2	137 909Claps	
005 Moon Vo	-S.E.-		090 SighBel	138 110Claps	
006 JzStpDrs	032-033 AirDrft x 2	-Percussion-	091-092 AnklBed x 2	139-140 HndClap x 2	
007 JzStpBas	034 SuperLow	055 PinChime	093 Shaker	141 FngSnap	
008 JzStpChd	035 RevoDown	056-057 BelTree x 2	094 ShakeEgg	142-146 clubKik x 5	
009 JzStpPad	036 SwepNoiz	058-059 Crotale x 2	095 Maracas	147-148 808Kik x 2	
010 JzStpMel	037 VerbyHlt	060-061 Triang x 2	096-097 Cabasa x 2	149 909Kik	
011 2step Bl	038 RevLASER	062-063 AccCym x 2	098-100 Bongo x 3	150 110Kik	
012-013 JnglBt x 2	039 WhtPulse	064-065 CupChim x 2	101-103 Conga x 3	151-152 AcuKik x 2	
014 Xylo Bkg	040 Spersk	066 Gong	104-105 Cajon x 2	153-156 clubHH x 4	
015 SynthBkg	041 SidWhstl	067 Tamtam	106-108 Timble x 3	157-158 808HH x 2	
016 Org Bkg	042 NoiseTap	068-070 Block x 3	109-112 SpokTom x 4	159-160 909HH x 2	
017 HipHipBkg	043 Dolphin	071-072 Claves x 2	113-116 OctTom x 4	161-162 110HH x 2	
018 Dldgerdp	044 Dolphin	073 Cricket		163-165 AcuHH x 3	
019 BongoPtn	045 Hi-O	074 FlexMtl	-Drums-	166 110 Cym	
020 CongaPtn	046 Spd-S	075 MtlCrash	117-125 clubSnr x 9	167-169 Splash x 3	
021 ShakrPtn	047 Welcome	076 Ratchel	126 808Snr	170-172 Crash x 3	
022 TablaPtn	048 ComeOn!	077 Vibrslp	127 909Snr	173 China 16	
023-025 16BIptn x 3	049 UGotGrv	078-081 Tmbrn x 4	128 110Snr	174-175 Ride x 2	
026-028 16BFI x 3	050 Yeaahh	082-083 Cowbell x 2	129 eSnr	176-178 808Tom x 3	
		084-085 CowbJam x 2	130-132 AcuSnr x 3	179-181 AcuTom x 3	

SAMPLING MODE/TIME

	Internal (approx.)	CompactFlash (approx.)					
		16MB	32MB	64MB	128MB	256MB	512MB
LONG	12 min.	12 min.	24 min.	48 min.	96 min.	193 min.	386 min.
STANDARD	6 min.	6 min.	12 min.	24 min.	48 min.	96 min.	193 min.
FINE	3 min.	3 min.	6 min.	12 min.	24 min.	48 min.	96 min.

Convenient CompactFlash storage

The SPD-S works with readily available CompactFlash media—making it easy to expand the onboard sampling time, store custom sounds, and even import or export .WAV/AIFF files using your Mac or PC.



*Please contact your authorized Roland dealer regarding compatibility of CompactFlash media.

Integrates easily with your kit

A great alternative to acoustic triggers and a rack sampler, the SPD-S lets you play up to eight sounds using six durable rubber pads and three superb-feeling edge triggers. There are no complicated settings to make. Just record a sound, assign it to a pad and go. Up to 12 minutes of sampling is provided in Long mode, along with CD-quality sampling and easy editing including Truncate and Trigger Mode functions.

Choose from pre-loaded or sampled sounds

With room for 399 User waveforms, the SPD-S can store plenty of samples. Better still, there are also 181 ready-to-play waveforms pre-loaded into User memory. These sounds are unique to the SPD-S and include a variety of acoustic and electronic drums, percussion, sound effects and phrase loops that can be combined with user samples to create the ultimate drum kit. A sampling CD is also included, making it easy to expand the onboard sounds.

Powerful sound creation tools

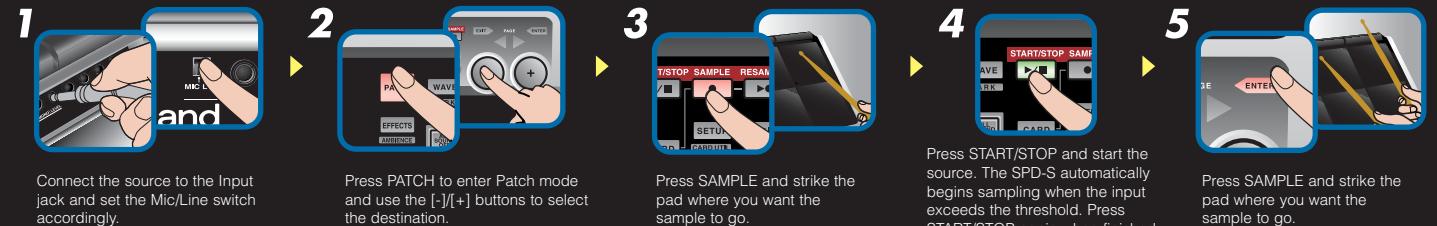
With 30 multi-effects algorithms and a unique ambience effect, the SPD-S offers endless sound-sculpting tools. Just add an effect and resample the output for quick and easy triggering! Using the Phrase Maker function, you can create custom phrase loops by resampling a pattern being triggered from the pads. And tweaking a sound or effect during performance is easy—just twist the front-panel knobs or use an optional expression pedal.

Expandable and customizable

The SPD-S has a stereo input and can accommodate up to two trigger units for playing a drum pad in either a head or head/rim configuration. And with MIDI In and Out, it makes a great controller and module as well. Drummers will also appreciate being able to assign two waveforms per pad and switch them via velocity or footswitch. The pads and the optional footswitch also make for an easy way to stop sounds, switch Patches and turn effects On or Off.

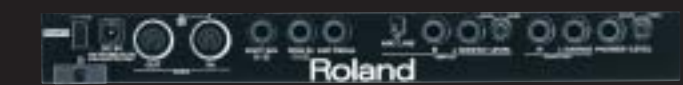
Sampling is easy!

Follow these simple steps to record and play a sound.



SPD-S SAMPLING PAD

REAR VIEW



SPECIFICATIONS

• Pads Built-in Pads: 9 • Maximum Polyphony 8 voices • Sampling Mode Fine/Standard/Long • Sampling Frequency 44.1 kHz • Input Level Line: -10 dBu, Mic: -50 dBu • Input Impedance 10 k ohms (LINE/MIC) • Output Level Output: -10 dBu • Output Impedance Output: 1 k ohms Headphones: 47 ohms • 0 dBu = 0.775 Vrms • Memory Patches: 128 Waves (User): 399 (Pre-loaded Sound 181), Card: 500 • Maximum Sampling Time 12 min. approx. (Internal Memory, Long Mode) • Effects Multi-Effects (30 Type) + Ambience (System) • Display 16 characters, 1 line (backlit LCD) • Connectors Output Jacks (L/Mono, R, 1/4 inch phone type), Input Jacks (L/Mono, R, 1/4 inch phone type) *LINE/MIC selectable, Headphones Jack (Stereo 1/4 inch phone type), Trigger Input Jack (1/4 inch TRS phone type), Expression Pedal Jack (1/4 inch TRS phone type), MIDI Connectors (IN, OUT), Footswitch Jack (1/4 inch TRS phone type), CompactFlash Card Slot • Power Supply DC 9 V AC Adaptor • Current Draw 1,000 mA • Dimensions 342 (W) x 282 (D) x 83 (H) mm / 13-1/2 (W) x 11-1/8 (D) x 3-5/16 (H) inches • Weight 2.1 kg / 4 lbs 11 oz (excluding AC Adaptor) • Accessories Owner's Manual, AC Adaptor (ACI-120C/ACI-230C/ACB-230E/ACB-240A), Sampling CD, Slit Tape, Screws: 2, Hexagon Wrench

*The SPD-S's CompactFlash file system is developed by Kyoto Software Research, Inc. Fugue ©1999-2003 Kyoto Software Research, Inc. All rights reserved.

Innovative Percussion Pads for Stage and Studio.



SPD-6 PERCUSSION PAD

REAR VIEW



SPECIFICATIONS

• **Max. Polyphony** 4 voices • **Number of Instruments** 113 • **Internal Memory** Preset: 16, User: 16
 • **Number of Pads** 6 • **Connectors** OUTPUT 1 (PHONES) / OUTPUT 2 (MONO), Pedal SW 1/2 (for DP-2, FS-5U) for Kick/Hi-Hat control, MIDI OUT, AC Adaptor • **Switches** SENS, POWER, BANK x4, NUMBER x4 - Control Volume • **Power Supply** DC 9V dry battery (AA type x6) or AC Adaptor (BOSS PSA series) • **Current Draw** 100mA • **Dimensions** 318 (W) x 241 (D) x 67 (H) mm / 12-9/16 x 9-1/2 x 2-11/16 inches • **Weight** 1.6 kg, 3 lbs. 9 oz. (incl. Batteries) • **Accessories** MIDI cable, Battery AA type x6 • **Options** PSA-Series AC Adaptor (BOSS)

Play it by hand or with sticks

Thanks to its Sensitivity Selection switch, the SPD-6 can be played by hand or using drum sticks. Its compact and easy-to-use design makes it a great choice not only for drummers, but for anyone who wants to add 113 high-quality drum sounds to their music. A total of 16 Preset and 16 User Patches are provided, which can be played using the six rubber pads.

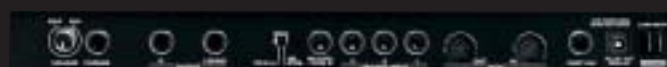
Compact design with room to grow

By connecting two optional footswitches, you can turn the SPD-6 into a super compact and portable electronic drum kit. It even works as a MIDI controller and sound module! Best of all, the SPD-6 can run on AC or battery power, so you can take it anywhere. There's never been an easier way to bring electronic percussion into your music.



SPD-20 TOTAL PERCUSSION PAD

REAR VIEW



SPECIFICATIONS

• **Max. Polyphony** 14 voices • **Number of Instruments** 700 • **Internal Memory** 99 Patches, 8 Patch Chains • **Sound Parameters** Instrument, Level, Pitch, Decay, Pan, Curve, Effect Send Level • **Effects** Reverb, Delay, Chorus, Flanger • **Number of Pads** 8 • **Display** 7-segment, 3-character LED • **Connectors** Output (L/Mono, R), Phones (Stereo), External Trigger Input* x 3 (Dual), Hi-Hat Control/Trigger4 Input* (Dual), MIDI (In, Out), Footswitch (Dual), AC IN *Trigger inputs 1 and 2 accept rim shots from the PD-7, -9, -80R and -120 while inputs 3 and 4 accept rim shots from the PD-7 and -9. • **Power Supply** AC12V, AC Adaptor • **Current Draw** 420mA • **Dimensions** 450 (W) x 350 (D) x 70 (H) mm / 17-3/4 (W) x 13-13/16 (D) x 2-13/16 (H) inches • **Weight** 2.8 kg / 6 lbs. 3 oz. (excl. AC Adaptor) • **Accessories** BOSS BRA-Series AC Adaptor, Slit Tape

Flagship sounds and features

The SPD-20's sound set includes everything from ethnic and world percussion instruments to classic and modern acoustic and electronic drum sounds—700 sounds total! Out of the box, you get 99 Preset Patches and six rhythm loops that can be played via eight high-quality pads with natural response—even when playing with common drumming techniques like rolls and flams.

Ininitely expressive

Four external dual-trigger inputs make the SPD-20 compatible with a dedicated hi-hat or kick drum controller and any of Roland's drum pads (including V-Pads™). The trigger inputs can also be used with acoustic drum triggers for triggering acoustic drums. Other noteworthy features include a velocity-sensitive Layer function, onboard effects and MIDI connections for using the SPD-20 as a controller or sound module.

Preset Instruments

SPD-20

Bass Drum (Kick) b01-b03 Dry Kick x 3 b04 Meat Kick b05 Pillow Kick	127-128 Room Tom x 2 129-130 Acoustic Tom x 2 131-132 TR-909 Tom x 2 133-134 TR-909 Tom x 2	L33 Vibra Slap L34-L38 Agogo Cabasa x 5 L39 L40-L45 Cuica x 6 L46-L52 Panderiro x 7 L53-L57 Surdo x 5 L58-L61 Tamborim x 4 L62-L65 Samba Whistle x 4 L66 Cox x 1 L67-L70 Berimbau x 4 L71-L74 Caixa x 4 L75 Rain Stick L76 Samba Bateria L77 Samba Loop (*2) L78 Shaker Loop (*2)	F28-F31 Reik Bendir x 4 F32 Ball Cymbal F33 Dawul F34 [Australia] F35 Clapstick Boomerang F36 Bloom Bell F37 Afro Loop (*2)	J45-J46 Chanchan x 2 J47-J48 Ball Cymbal x 2 J49 Thai Gong J50-J51 Jaws Harp x 2	M24 Yang Qin [Southeast Asia] M25 Bonang M26 Gender M27 Saron M28 Angklung M29-M30 Gamelan x 2 M31 Triangle M32 Iron Hammer M33 Bamboo M34 Drip M35-M36 Synth Strings x 2 M37-M43 Brass x 7 M44-M52 Choir x 9 M53-M59 Bass x 7	d11-d12 Scratch Bass Drum x 2 d13 Scratch Snare d14 Jungle Hat d19-d21 High-Q x 3 d22 Air Blip d23 Techno Snap d24 Organ Chord d25 Distortion Guitar d26 Auh Voice d27 Techno Chord d28 Techno Scene d29 Synth Hi d36 Retro UFO d37 Meta Sweep d38 Bounce d39 Distortion Swish d40 PCM Press d41 Jungle Roll Kick d42 Jungle Roll Snare d43 Techno Loop (*2)	e11-d12 Scratch Bass Drum x 2 e14 Monster Drum e42 Can Drum e43-E46 Wah Guitar x 4 n01-n02 Telephone x 2 n03 Doorbell n04 Dog Bark n05 Bird n06 Car Door n07 Car Stop n08 Horn n09 Punch n13 Machine Gun n14 Pistol n15 Siren n23 Owl n24 Woah n25 Oh! n26 Chikil n27 Hey! n28 Out n29 Owl Up n30 Scream n31 Voice Loop (*2) r01 Kick Ambience r20 Reverse Tom
Snare Drum S01-S03 Piccolo Snare x 3 S04-S06 Batech Snare x 3 S07-S09 Acoustic Snare x 3 S10-S12 Steel Snare x 3 S13-S15 Loose Snare x 3 S16-S21 Medium Snare x 6 S22-S26 Concert Snare x 5 S27 Roll Snare S39-S45 Brush Snare x 7 S46 Rock Snare S47 Rooker Snare S70-S71 Jungle Snare x 2 S72-S73 Electronic Snare x 2 S74-S75 TR-909 Snare x 2 S76 TR-909 Snare S77 TR-707 Snare S78 TR-808 Snare S79 CR-78 Snare S80-S86 Cross Stick x 7	H01-H02 Pop Hi-Hat x 2 H17 Hand Cymbal Hi-Hat C01-C04 Crash Cymbal x 4 C05-C07 Chinese Cymbal x 3 C08 C15-C20 Ride Cymbal x 6 C21-C26 Sizzle Ride Cymbal x 6 C35 TR-808 Cymbal C36 TR-606 Cymbal L01-L05 Bongo x 5 L06-L10 Conga x 6 L11-L18 Cowbell x 5 L19-L20 Claves x 2 L21-L22 Guiro x 2 L23 Maracas L24-L26 Shaker x 3 L27-L28 Tambourine x 2 L29-L32 Timbale x 4	Indian Percussion I01 Sarua Bell I02 Baya x 5 I07-114 Tabla x 8 I15-I20 Pot Drum x 6 I21-I24 Dholak x 4 I25-I27 Madal x 3 I28 Khole I29-I32 Dhol x 4 I33 Tabla Baya Loop (*2) African/Middle Eastern/Australian/Other Percussion F01 Shaker F02-F06 Djembe x 5 F07-F09 Talking Drum x 3 F10-F13 Afro Drum x 4 F14 Mesh Castanets (Middle East) F15 Bell Tree F16-F17 Sngal x 2 F18-F20 Darbuka x 3 F21-F22 Doira x 2 F23-F27 Doholla x 5	F28-F31 Reik Bendir x 4 F32 Ball Cymbal F33 Dawul F34 [Australia] F35 Clapstick Boomerang F36 Bloom Bell F37 Afro Loop (*2) Japanese/Korean/Chinese/Southeast Asian Percussion J01 Biwa J02 Awa-gane J03 Hyosugi J04 Ohkawa J05-J07 Taucum x 3 J08-J09 Shime Taiko x 2 J10-J11 Matsuri Taiko x 2 J12-J14 Taiko x 3 J15 Matsuri J16 Yoyo Duda J17-J18 Buk x 2 J19 Jang-Gu J20-J22 Jing x 3 J23-J25 Gengari x 3 J26-J28 Ban Gu x 3 J29-J30 Gu x 2 J31-J32 Tang Gu x 2 J33-J34 Hi-Yin Luo x 2 J35 Nao Bo J36 xiao Bo J37-J38 Tam-Tam x 2 J39-J42 Gong x 4 J43 Finger Cymbal J44 Rama Cymbal	M24 Yang Qin [Southeast Asia] M25 Bonang M26 Gender M27 Saron M28 Angklung M29-M30 Gamelan x 2 M31 Triangle M32 Iron Hammer M33 Bamboo M34 Drip M35-M36 Synth Strings x 2 M37-M43 Brass x 7 M44-M52 Choir x 9 M53-M59 Bass x 7 Analog Percussion A01 DR-55 Claves A02 CR-78 Cowbell A03 CR-78 Metallic Beat A04 CR-78 Guiro A05 CR-78 Tambourine M04-M05 Marimba x 2 M06 Bass Marimba A07 Celesta M08-M09 Tubular Bells x 2 A09 TR-707 Cowbell A10 TR-727 Agogo A11 TR-808 Conga A12 TR-808 Claves A13 TR-808 Maracas A14 TR-808 Cowbell A15 TR-808 Hand Clap A16 TR-909 Hand Clap Dance Sounds d01-d02 Hand Clap x 2 d03 Little Clap d04 Hip Clap d05 Afro Clap d06-d10 Scratch x 5			

SPD-6

Kick 1 Kick 2 Mix Kick 3 Jazz Kick 1 4 Jazz Kick 2 5 MONDO Kick 6 HipHop Kick 7 808 Kick 1 8 808 Kick 2 9 Electronic Kick	15 Gated Snare 16 808 Snare 17 Electronic Snare 1 18 Electronic Snare 2 19 Cross Stick 20 Snare Roll 21 Brush Roll Snare 22 Brush Swish Snare 23 Brush Slap Snare Tom-Tom 24 High Tom 1 25 High Tom 2 26 Mid Tom 1 27 Mid Tom 2 28 Low Tom 1 29 Low Tom 2	30 Room High Tom 31 Room Mid Tom 32 Room Low Tom 33 Power High Tom 1 34 Power High Tom 2 35 Power Mid Tom 1 36 Power Mid Tom 2 37 Power Low Tom 1 38 Power Low Tom 2 39 808 High Tom 1 40 808 High Tom 2 41 808 Mid Tom 1 42 808 Mid Tom 2 43 808 Low Tom 1 44 808 Low Tom 2 45 Electronic High Tom 46 Electronic Mid Tom	Hi-Hat Cymbal 47 Electronic Low Tom 48 Closed Hi-Hat [EXC 1] 49 Pedal Hi-Hat [EXC 1] 50 Open Hi-Hat [EXC 1] 51 808 Closed Hi-Hat [EXC 1] 52 808 Open Hi-Hat [EXC 1] Cymbal 53 808 Open Hi-Hat [EXC 1] 54 Crash Cymbal 1 55 Crash Cymbal 2 56 Splash Cymbal 57 Ride Cymbal 1 58 Ride Cymbal 2 59 808 Cymbal	Percussion 60 Reverse Cymbal 61 High Bongo 62 Low Bongo 63 Open High Conga 64 Mute High Conga 65 Low Conga 66 Cowbell 67 Claves 68 Long Guiro [EXC 2] 69 Short Guiro [EXC 2] 70 Maracas M22 Balaphone M23 Afro Zither 74 Low Timbale	75 Vibra-Slap 76 High Agogo 77 Low Agogo 78 Open Cuica [EXC 3] 79 Mute Cuica [EXC 3] 80 Open Surdo [EXC 4] 81 Mute Surdo [EXC 4] 82 Whistle 83 High Wood Block 84 Low Wood Block 85 Bell Tree 86 Open Triangle [EXC 5] 87 Little Clap [EXC 5] 88 Metronome Bell [EXC 5] 89 Metronome Click	Dance 90 Hand Clap 91 Scratch 92 Scratch Pull [EXC 6] 93 Scratch Push [EXC 6] 94 High Q 95 Slap 96 Guitar Slide 97 String Slap Sound Effects 98 Telephone 99 Dog 100 Kitty 101 Car-Engine 102 Car-Stop 103 Car-Crash	104 Door Creaking 105 Door 106 Foot Step 107 Heart Beat 108 Screaming 109 Punch 110 Laughing 111 Thunder 112 Gun Shot 113 Laser-gun [EXC7]: Sounds of the same number will not play simultaneously.
---	---	---	--	---	--	---	---

A "Hands On" Approach to Electronic Percussion.



The HPD-15 HandSonic® is an electronic percussion multi-pad designed to be played by hand or finger. Using V-Drums® triggering technology, this futuristic instrument allows hand percussionists to play up to 15 sounds naturally without using sticks.

A dynamic pad with V-Drums technology

Divided into 15 parts, the HPD-15's ultra-sensitive 10-inch rubber pad can be used to trigger up to 15 different sounds using techniques from hard conga slaps to the light finger touch needed for tabla performances. And because the main pad supports positional sensing, you can create timbre changes just by striking different areas of the pad.

Loaded with high-quality sounds

Divided into 15 parts, the HPD-15's ultra-sensitive 10-inch rubber pad can be used to trigger up to 15 different sounds using techniques from hard conga slaps to the light finger touch needed for tabla performances. And because the main pad supports positional sensing, you can create timbre changes just by striking different areas of the pad.

Expressive realtime control

The HPD-15's knobs can be used for controlling pitch, timbre and multi-effects, while dual ribbon controllers create realistic conga slides and make triggering guiro sounds more natural. You can even create rolls by pushing harder on the pads. The D Beam, on the other hand, uses an infrared light beam for adjusting pitch, filter cutoff and triggering sounds like a gong or a bell tone. An optional expression pedal may also be used.

Handy performance features

Perfect for practice or composition, the HPD-15's 4-part pattern sequencer provides 99 Preset and User patterns. And with MIDI In and Out, you can use the HandSonic as a sound module or as the ultimate controller for playing into your sequencer. Live performers will appreciate the ability to add an optional hi-hat controller and kick trigger, as well as the HPD-15's 1/4-inch Line input for blending in external sounds.

HANDBONIC HPD-15

REAR VIEW



SPECIFICATIONS

- Maximum Polyphony 64 voices • Instruments Pad Instruments: 600. Backing Instruments: 54 • Preset Patches 160 • User Patches 80 • Patch Chains 10 chains (32 steps per chain) • Effect Type Reverb, Multi-Effects • Sequencer Preset Patterns : 99, User Patterns: 99 (Maximum). Tracks: 4, Play Functions: OneShot, Loop, Tap, Resolution: 96 ticks per quarter note, Recording Method: Real-time • Tempo 20-240 • Display 16 characters, 2 lines (backlit LCD) • Controls Volume Knob, Realtime Modify Knob 1/2/3, Ribbon L/R, D Beam Controller • Pad 10 inches, 15 sections, Pressure-Sensitive
- Connectors Output Jacks (L/Mono, R), Phones Jack (stereo), Mix In Jack (stereo), Expression Pedal / Hi-Hat Control Jack, Trigger Input Jack (dual), Foot Switch Jack (dual), MIDI Connectors (IN, OUT/THRU) • Output Impedance 1k ohms • Power Supply AC Adaptor (DC 9V) • Current Draw 1000mA • Dimensions 406 (W) x 405 (D) x 98 (H) mm / 16 (W) x 16 (D) x 3-7/8 (H) inches • Weight 2.9 kg / 6 lbs 7 oz (Excluding AC Adaptor)
- Accessories AC Adaptor (ACI/ACB Series), Label

Preset Patches & Preset Instruments

PRESET PATCHES

LATIN				AFRICAN				ASIAN				DRUMS				DANCE				OTHERS			
P01 01	Conga	P02 01	TalkingDrm	P03 04	Dhol	P04 07	JavaGamelan	P05 01	Vibraphone	P06 01	Standard	P07 01	Clap&Scrth	P07 23	DanceMenu1	P09 05	Flute						
P01 02	Bongo	P02 02	Djembe S	P03 05	DrmOIndia	P04 08	BalGamelan	P05 02	Glockenspiel	P06 02	Jazzbrush	P07 02	FILTERED	P07 24	DanceMenu2	P09 06	Syn String						
P01 03	Timbales	P02 03	Djembe L	P03 06	MadaTalan	P04 09	Bali&Java	P05 03	Xylophone	P06 03	Analog	P07 03	Trash Beat	P09 07	Saw Wave	P09 08	Juno Wave						
P01 04	Latin Toys	P02 04	Frame Drum	P03 07	Tabla II	P04 10	Conga	P05 04	Mariimba	P06 04	TR-909	P07 04	LatinHouse	P09 09	Fantasy	P09 10	Thick Pad						
P01 05	CONGAbongo	P02 05	Pot Drum	P03 08	Tabla III	P04 11	Angklung	P05 05	Marimba	P06 05	TR-909	P07 05	Techey	P09 11	Calliope	P09 12	Melody-808						
P01 06	TimbaleMix	P02 06	Kalimba	P03 09	TABLATIX	P04 12	Bonang	P05 06	Shime Taiko	P06 06	Studio	P07 06	TechDance	P09 12	Calliope								
P01 07	Conga II	P02 07	Log Drum	P03 10	Sitar	P04 13	Gendler	P05 07	TubularBell	P06 07	Rock Stage	P07 07	EthnoDance	P09 13	Calliope								
P01 08	Borgio II	P02 08	Balaphone	P03 11	Santoor/Maj	P04 14	Saron	P05 08	Turk-Mitry	P06 08	Swing	P07 08	Cosmo 21	P09 14	Calliope								
P01 09	TimbalesII	P02 09	Gyilli	P03 12	Santoor/Min			P05 09	Timbale	P06 09	Brushes	P07 09	Industrial	P09 15	Calliope								
P01 10	BONGO-BRS	P02 10	Alro Zither	P03 13	Tambura			P05 10	Darbuka	P06 10	Orch Set	P07 10	UndaGround	P09 16	Calliope								
P01 11	TimbaSong	P02 11	MonguDrum	P03 14	Darbuka	P03 15	Rek	P05 11	Darbuka	P06 11	Mini-Set	P07 11	StreetBeat	P09 17	Calliope								
P01 12	Steel Drum	P02 12	AfricaToys	P03 16	Doholla	P03 17	Doira	P05 12	Xylophone	P06 12	Hi-Boy	P07 12	909-2000	P09 18	Calliope								
P01 13	Pandeiro	P02 13	Gyilli&Cng	P03 18	Doira	P03 19	Turk-Mitry	P05 13	Marimba	P06 13	Low&Dry	P07 13	AlienDance	P09 19	Calliope								
P01 14	Surdo	P02 14	NaturePerc					P05 14	Jazz&S&Bs	P06 14	Jazz Mix	P07 14	TechNow	P09 20	Calliope								
P01 15	ES/OCLA	P02 15	Gyil&Baph					P05 15	Blues&B	P06 15	Blues&B	P07 15	Sweep 808	P09 21	Calliope								
P01 16	Berimbau	P02 16	TalkDrm II					P05 16	Blues&B	P06 16	Blues&B	P07 16	Revolution	P09 22	Calliope								
P01 17	PandeiroII	P02 17	PotDrum II					P05 17	Orch Hit	P06 17	Drum&Horns	P07 17	Backbeat	P09 23	Calliope								
P01 18	Surdo II							P05 18	MATSURI	P06 18	TechnoGate	P07 18	AmberWater	P09 24	Calliope								
P01 19	Brasil Mix							P05 19	CHINA	P06 19	FlangeDrums	P07 19	SynthDrums										
P01 20	Perc Echos							P05 20	Yang Qin	P06 20	JunkyDrums	P07 20	DiscoCCA										
P01 21	SpaceConga							P05 21	Aux Perc	P06 21	Brush Box	P07 21	Dance 6										
P01 22	808 Latin											P07 22	Lock Out										

PRESET INSTRUMENTS

LATIN				AFRICAN				ASIAN				DRUMS				DANCE				OTHERS					
L01-L05,L07	Bongo HI	x 6	L97	Caxixi	x 1	F51	Alro Feet	x 1	I36-I38	Sagat	x 3	A21-A23	Gu	x 3	ORCH	Sleigh Bell	x 1	DRUMS	R01-R12	Kick	x 12	SFX	S23-S26	Shot	x 4
L06, L08	Bongo Lo	x 2	I94-I96	Berimbau	x 5	F52	Alro Slomp	x 1	I39-I41	Darbukka	x 3	A24-A25	Tang Gu	x 2	O01	Tree Chimes	x 1	R02-R24	Sitar	x 22	S27-S36	Noise	x 10		
L09-L18			I07-I08	Cinax	x 3	F53-F54	Hand Drum	x 2	I42-I43	Dura	x 2	A26-A27	Hu Yin Luo	x 2	O02	Triangle	x 2	R35-R38	CrackSik	x 2					
L28-L29	Conga Hi	x 12	I09	Rain Stick	x 2	F55-F57	Mongu	x 3	I44-I49	Doholla	x 6	A28	Xiao Bo	x 1	O03-O04	Castanets	x 2	R39-R42	Stick	x 6					
L19-L27,L30	Conga Lo	x 10	I10-I11	SambaBateria	x 1	F58	Clapstick	x 1	I50-I53	Rek	x 4	A29	Xiao Bo	x 1	O05	Castanets	x 2	R43-R56	Tom	x 14	OTHERS	T01-T05	Piano	x 5	
L31-L34	Cowbell	x 4	I12-I13	SpaceConga	x 2	F59	Boomerang	x 1	I54	Bendir	x 1	A30	Large Tam Tam	x 1	O06-O07	Wood Block	x 2	R57-R76	Whel Pedal	x 1	T06-T08	Guitar	x 21		
L35-L36	Claves	x 2	I14-I25	SpaceConga	x 2	F60	Bamboo	x 1	I55	Drum	x 1	A31	Small Gong	x 1	O08	Slapstick	x 1	R77-R78	KickCymbal	x 3	T09-T41	Bass	x 13		
L37-L40	Guero	x 4	I16-I17	AnalogPercs	x 12	F61	BloomBell	x 1	I56-I57	Hmrdicmr	x 2	A32	Flange Cym	x 2	O09-O10	Concert B&Dr	x 2	R79-R96	Cymbal	x 16	T42-T44	Strings	x 3		
L41	Maracas	x 1				F62						A33	Bend Gong	x 1	O11	Timpani	x 1	R97	Wheel Pedal	x 1	T45-T50	Brass	x 6		
L42-L44	Shaker	x 3				F63						A34	Yang Qin	x 1	O12	Perc Hit	x 1	R98-R01	KitCymbal	x 3	T51	Tenor sax	x 1		
L45-L46	Tambourine	x 2				F64						A35-A36	Yang Qin	x 1	O13	Perc Hit	x 1	R02	KitCymbal	x 3	T52	Flute	x 1		
L47-L59	Timbale	x 13				F65						A37	Rama Cymbal	x 1	O14	Drum Hit	x 2	R03	Voice Kick	x 1	T53-T58	Wave	x 6		
L60	Vibra Slap	x 1				F66						A38-A40	Chenchen	x 3	O15	Drum Hit	x 2	R04	Voice Snare	x 1	T59-T68	Synth	x 10		
L61-L62	Steel Drum	x 2				F67						A41-A43	Ball Cym	x 3	O16	Glockenspiel	x 1	R05	Voice HHat	x 1					
L63-L69	Agogo	x 7				F68						A44	Thai Gong	x 1	O17	Vibraphone	x 1	R06	Voice HHat	x 1					
L70	Cabasa	x 1				F69						A45-A47	Jaw&Harp	x 3	O18	Xylophone	x 1	R07	Voice HHat	x 1					
L71-L78	Cajon	x 8				F70						A48	Shime Taiko	x 2	O19-O20	Marimba	x 2	R08	Voice HHat	x 1					
L79-L84	Pandeiro	x 6				F71						A49	Matsuri Taiko	x 2	O21	Bass Marimba	x 1	R09	Voice HHat	x 1					
L85-L89	Surdo	x 5				F72						A50	Shime Taiko	x 2	O22	Gendler	x 1	R10	Voice HHat	x 1					
L90-L93	Tamborim	x 4				F73						A51	Jang-Gu	x 1	O23	Hi-Hat	x 1	R11	Voice HHat	x 1					
L94-L96	Whistle	x 3				F74						A52-A53	Angklung	x 2	O24	Glass	x 1	R12	Voice HHat	x 1					

Options

Personal Monitor Amplifier PM-1



A Monitor Built for Electronic Percussion.

The PM-1 is the perfect monitoring system for Roland's SPD-Series and HPD-15 HandSonic. Precisely tuned for the needs of acoustic and electronic percussionists, the PM-1's 60-watt amplifier and 2-way speaker system sound great on stage or at home. And monitoring is easy, thanks to a smart angled design that even accommodates drum stands.



*Requires APC-33 Clamp Set.



Controls



Connectors

Pads

V-Pads™
PD-120/100/80R/80
Dual-Trigger Pads
PD-9/7



▲ PD-120

Single-Trigger Pad
PD-6

Extension pads for the SPD-S, SPD-20, and HPD-15, allowing users to trigger additional sounds using high-quality "mesh" or rubber drum heads. PD-120 and PD-100 pads available in red or purple.



▲ PD-9

Kick Triggers

V-Kicks
KD-120/80

KD-120 kick available in red or purple.

▶ KD-80



Kick Trigger Unit
KD-7

*Beater and connection cable included.
*Kick drum pedal not included and shown only for photography purposes.

▶ KD-7



Cymbals

V-Cymbals™
CY-12R/C, CY-14C,
CY-15R, CY-12H



▲ CY-12R/C

Dynamic crash, ride and hi-hat cymbals designed to faithfully re-create acoustic cymbal dimensions, movements and inertia.

Dual-Trigger Cymbal Pad
CY-6

Affordable dual-trigger crash/ride cymbal with natural "swinging" motion and super-accurate triggering.

Pad Stand

Pad Stand
PDS-15

Slant-type stand designed for hand percussion products like the HPD-15 and SPD-6.



▶ Setup Example
PDS-15 can be slanted to improve HPD-15's playability.

Acoustic Drum Triggers



Kick Trigger
RT-7K



Snare Trigger
RT-5S

*Trigger: 2 (head, rim)



Tom Trigger
RT-3T

Trigger MIDI Converter

Trigger MIDI Converter
TMC-6

An affordable way to play and trigger MIDI modules and samplers from an acoustic drum set, or expand the capabilities of an electronic set.



Others

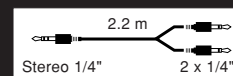


Hi-Hat Control Pedal
FD-7



Pedal Switch
DP-2

Connection Cable
PCS-31



Expression Pedal
EV-5



All Purpose Clamp
APC-33

Heavy-duty mounting clamp for use with the SPD-S/20/6 and the HPD-15.



Footswitch BOSS
FS-5U



Stereo Headphone
RH-50